

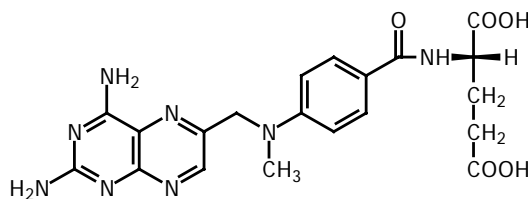
Schircks Laboratories
 Buechstrasse 10
 CH-8645 Jona
 Switzerland
 Telephone +41 (0) 55 / 225 52 25
 Telefax +41 (0) 55 / 225 52 26
 E-Mail labschircks@gmail.com
 Website www.schircks.ch

Schircks Laboratories

DATA SHEET

Methotrexate Product No. 16.411

Synonym: Amethopterin, *N*-{4-[(2,4-diamino-6-pteridiny)methyl]methylamino}benzoyl}-L-glutamic acid
 Abbreviation used: MTX



$C_{20}H_{22}N_8O_5$

MW 454.4

Description	Yellow to orange brown crystalline powder										
Biochemistry	Methotrexate is an antimetabolite. It is an inhibitor of dihydrofolate reductase. MTX acts by altering the body's use of folic acid (a vitamin), which is needed for cell growth. It is suspected that this interference with folic acid is an important reason for methotrexate's benefit in rheumatoid arthritis.										
Solubility	MTX is practically insoluble in water. It is sparingly soluble in 0.01 M NaOH pH 10.0, (0.25 g/100 g 0.01 M NaOH (22°C)). Ultrasonication may be used to improve dissolution.										
HPLC Conditions	<table border="0"> <tr> <td>column</td> <td>Waters Spherisorb S5-ODS1</td> </tr> <tr> <td>eluant</td> <td>10 mM Na₂HPO₄ pH 6.0 / Methanol (19:1)</td> </tr> <tr> <td>flow rate</td> <td>1 ml/min</td> </tr> <tr> <td>wavelength</td> <td>254 nm</td> </tr> <tr> <td>solution</td> <td>1 mg/ml 0.01 M NaOH</td> </tr> </table>	column	Waters Spherisorb S5-ODS1	eluant	10 mM Na ₂ HPO ₄ pH 6.0 / Methanol (19:1)	flow rate	1 ml/min	wavelength	254 nm	solution	1 mg/ml 0.01 M NaOH
column	Waters Spherisorb S5-ODS1										
eluant	10 mM Na ₂ HPO ₄ pH 6.0 / Methanol (19:1)										
flow rate	1 ml/min										
wavelength	254 nm										
solution	1 mg/ml 0.01 M NaOH										
Purity: HPLC	>98.5%. Related substances are N-methylfolic acid, 4-aminofolic acid, 2,4-diamino-10-methylpteroic acid and 10-methylpteroic acid.										
Stability	Methotrexate powder is stable at room temperature for at least 3 months. It is hygroscopic. A 1 mM solution of MTX in 0.01 M NaOH is very stable. HPLC analysis of the 1 mM solution after 7 days at room temperature showed no degradation.										
Storage	Keep the powder dry in amber vials at -20°C or colder. Methotrexate can be transported without the use of dry ice.										
Uses	MTX was first developed to treat certain types of cancer. It is routinely used at high doses as a cancer therapy and is also used at much lower doses to treat neoplastic diseases, severe psoriasis, Crohn's disease and adult rheumatoid arthritis. Our product is sold for laboratory use only.										
Precautions	Highly Toxic. Use Special Handling precautions. Avoid inhalation and skin contact. Side effects to the use of this drug may include suppression of bone marrow production of blood cells, hepatitis, and others.										
References	"Taber's Cyclopedic Medical Dictionary", Copyright © 2001 by F. A. Davis Co., Phil., PA.										

Further data sheets can be found on our website www.schircks.com

The information given in this publication is based on our current knowledge and experience. It does not relieve users or processors from carrying out their own precautions and tests.